



Pear tree Hill Solar Farm

Environmental Statement

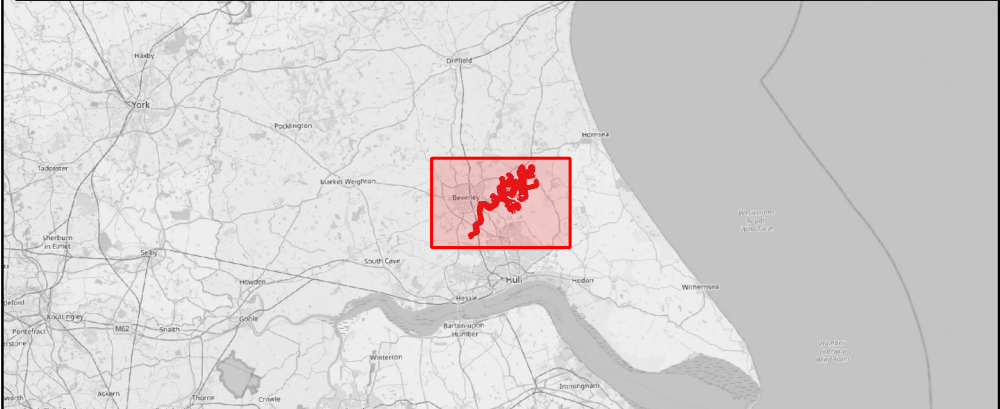
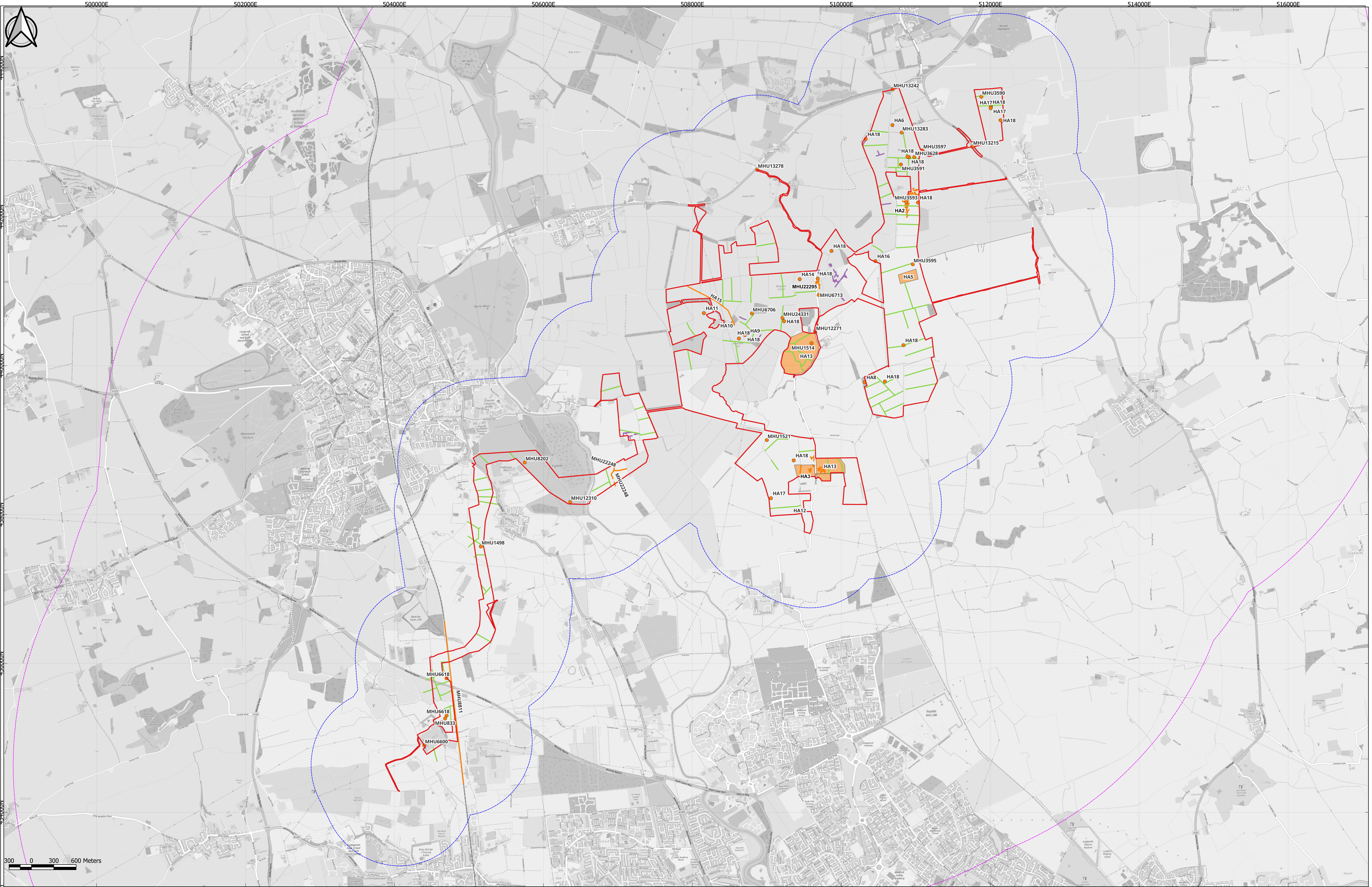
Volume 3

Figure 9.3: Assessed Non-Designated Heritage Assets

Revision 2

Application Document Ref: EN010157/APP/6.3
September 2025

Planning Act 2008
Infrastructure Planning
(Applications: Prescribed Forms
and Procedure) Regulations 2009 –
Regulation 5(2)(a)



Key

- Order Limits
- 1km study area
- 5km study area
- Non-designated heritage asset (line)
- Non-designated heritage asset (point)

- Non-designated heritage asset (polygon)
- HA4
- HA7

Notes:
Document reference: EN010157/APP/6.3

PO2	28/08/2025	EI	NM	LR	AT
App	Date	By	Chkd	Appd	Authd

Client

RWE

Designer

RSK

Project Name
Peartree Hill Solar Farm

Drawing Title
Environmental Statement Volume 3, Figure 9.3: Assessed Non-Designated Heritage Assets

Scale at A1 1:23200	Coordinate System: British National Grid
Status DCO Application	
PINS Number EN010157/APP/6.3	Rev P02
SHEET 1 OF 1	

RWE Renewables UK Limited

Windmill Hill Business Park,
Whitehill Way,
Swindon,
Wiltshire,
England,
SN5 6PB
www.rwe.com